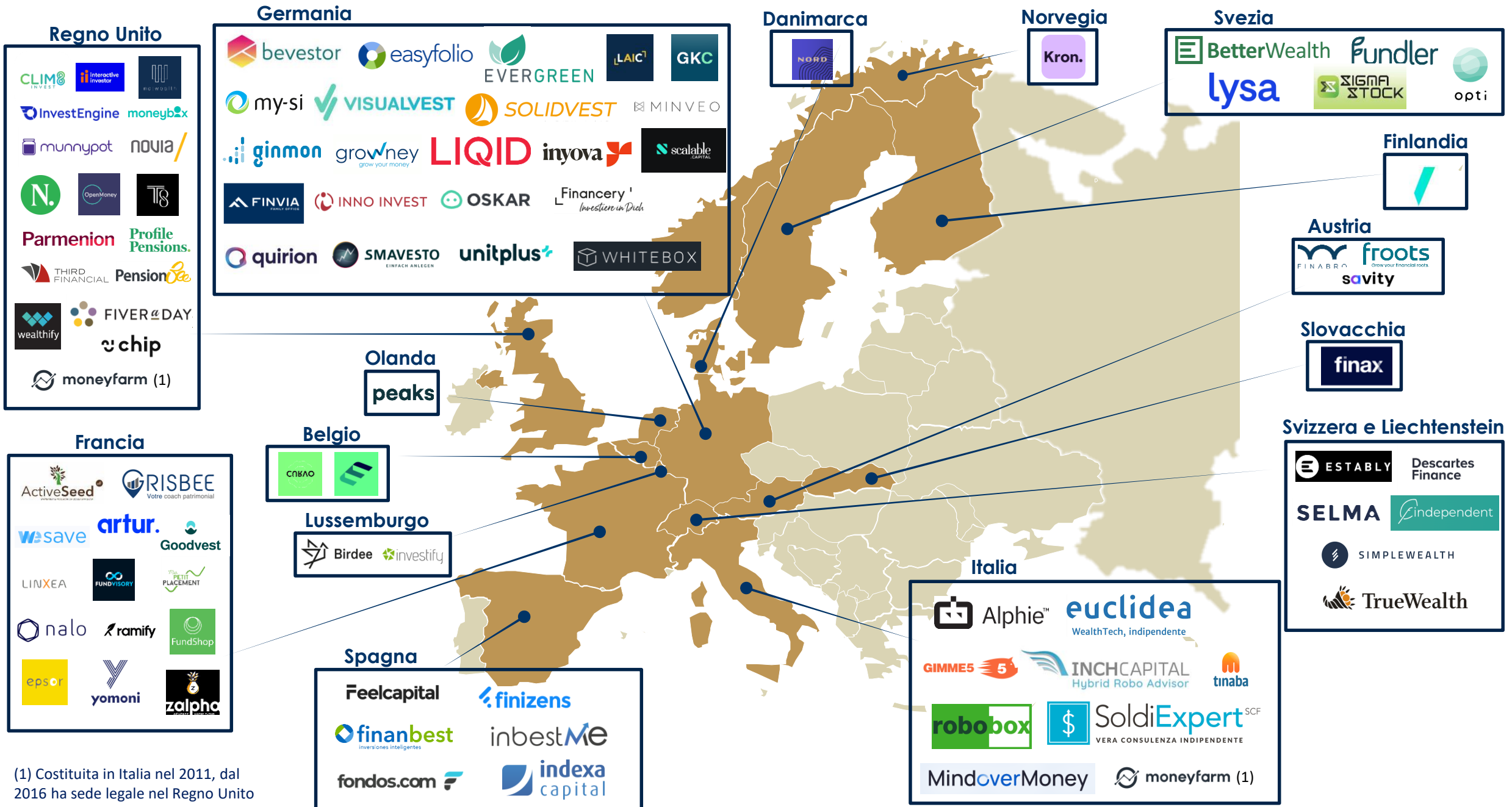
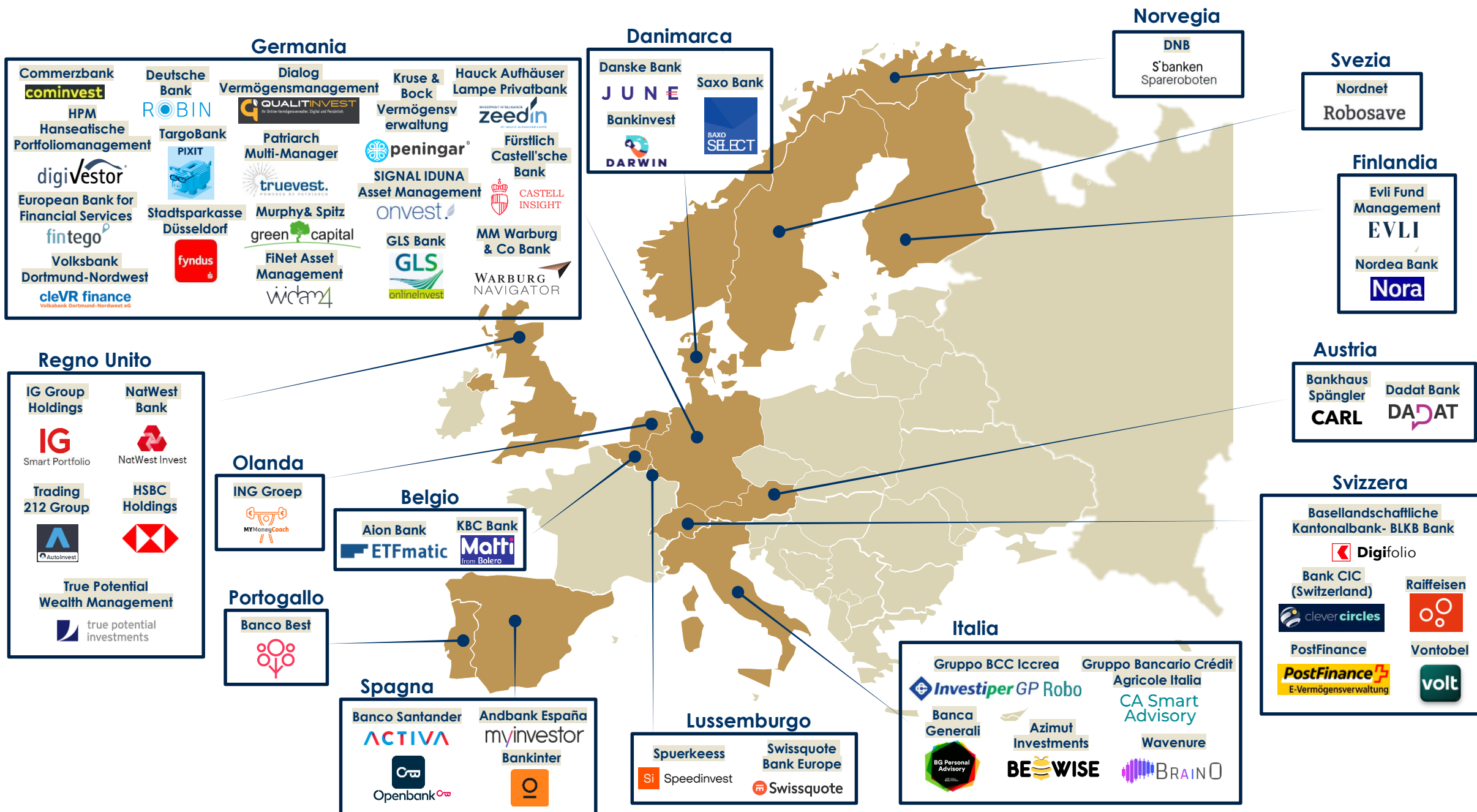


MAPPA DELLE SOCIETÀ DI DIGITAL WEALTH MANAGEMENT CON SEDE IN EUROPA



(1) Costituita in Italia nel 2011, dal 2016 ha sede legale nel Regno Unito

MAPPA DEI PRINCIPALI DIGITAL WEALTH MANAGEMENT BRAND DEGLI INCUMBENT CON SEDE IN EUROPA



IL DIGITAL WEALTH MANAGEMENT IN ITALIA



A large, light gray circle containing the logos of several digital wealth management companies. The logos are arranged as follows:

- Alphie™ (top center)
- euclidea WealthTech, indipendente (middle left)
- GIMME5 (middle right)
- INCHCAPITAL Hybrid Robo Advisor (lower middle left)
- moneyfarm (1) (lower middle right)
- robobox (bottom left)
- SoldiExpert SCF VERA CONSULENZA INDIPENDENTE (bottom center)
- MindoverMoney (bottom right)
- tinaba (bottom center)

Branches

A vertical list of company names and logos, each enclosed in a red-bordered box. The items are:

- Azimut Investments
- BEWISE
- Banca Generali
- BG Personal Advisory
- Gruppo Bancario Crédit Agricole Italia
- CA Smart Advisory
- Gruppo BCC Iccrea
- Investiper GP Robo
- Wavenure
- BRAIN0

(1) Costituita in Italia nel 2011, dal 2016 ha sede legale nel Regno Unito